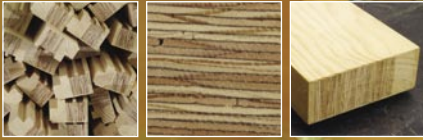




Timbmet Innovation



Timbmet Engineered Components

 **TIMBMET**
Everything wood should be

Where **strength** and **beauty** meet

What is TEC?

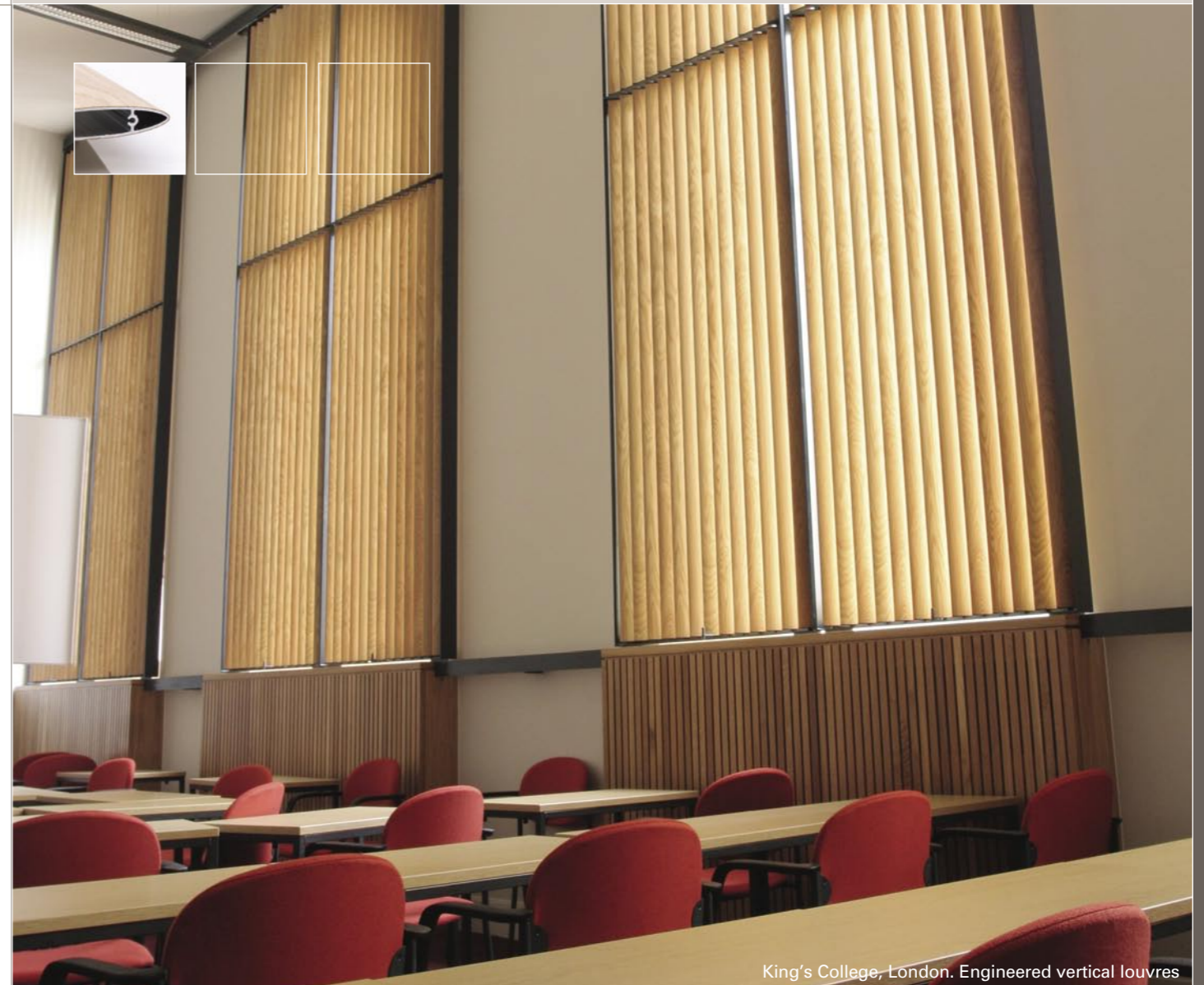
Timbmet Engineered Components are highly engineered wood products with potential applications as limitless as your imagination.

Part of Timbmet Innovation, the revolutionary and ever expanding group of innovative wood products sourced from around the world, TEC products are famous for their stability and versatility. Dramatically increasing the potential for the effective application of timber while out-performing the properties of non-engineered timber, they provide ideal solutions for architects, joiners and contractors.

Offering real strength and extraordinary efficiency, TEC products retain and enhance the beauty and appeal of real wood while giving you finger-jointing technology, wood veneers, advanced adhesives and substrates like LVL, aluminium and plastic. No matter how demanding your project, you can be sure TEC will provide a perfect solution.

Why TEC?

Leading the industry in innovation and the use of cutting-edge technology, TEC products radically increase the potential for the effective application of timber. Thanks to our experimentation with a vast range of materials and extremely rigorous testing procedures, we have produced an impressive range of engineered wood components, guaranteed to out-perform regular timber every time.



King's College, London. Engineered vertical louvers

Benefits at a glance:

Dimensional stability

The multi-layer construction offers stability and stress performance far in excess of traditional solid wood.

Reduced wastage

The components are made to measure, resulting in less waste. As they are easy to assemble, labour costs are kept to an absolute minimum.

Flawless

TEC products are free from the problems associated with knots, splits and staining. Each component is consistently graded and dried, giving a uniform performance and appearance.

Reduced handling

All the components are regularly sized which makes handling quicker and easier and the use of storage space more efficient.

Environmentally friendly

As TEC products reduce waste, the timber is used more efficiently, thereby satisfying the most exacting demands for products that contribute to environmental sustainability.

Reduced costs

Better use of materials, handling and storage guarantees significant savings.

Off the shelf TEC

WINDOW **TEC**™



DOOR **TEC**™



STAIR **TEC**™



Species

Idigbo, Iroko, Lyptus, Meranti, European Oak, FSC European Oak, American White Oak, Sapele, FSC or PEFC Redwood, FSC or PEFC Larch

Stile/Muntin/Top Rail

48 x 95mm, 48 x 120mm, 63 x 120mm, 72 x 95mm, 72 x 120mm
Lengths 0.8m-1.5m and 2.0m-3.0m

Mid/Bottom Rail

Hardwood – 48 x 200mm, 63 x 200mm, 72 x 200mm in lengths of 1.0m or 1.2m
Softwood – 48 x 220mm, 63 x 220mm, in lengths of 0.8m-1.2m

Performance

All sections achieve FD30 Fire Rating

Species

Oak and edge-glued pine available from stock. Other species available to order

Stair String

32 x 275mm x 4.8m

Stair Tread

32 x 275mm
in lengths of 1.0m and 1.2m

Newel Post

Hardwood - 90 x 90mm in lengths of 1.7m, 2.1m, 2.4m and 3.0m
Softwood - 96 x 96mm in 6.0m lengths

Insulated door panels

For the highest levels of thermal and acoustic insulation, the TEC range of fire-tested, engineered door panels can't be beaten. Eliminating the need for return site visits, they are absolutely ideal if you have particular energy saving requirements.

28mm insulated door panel

- 28mm panels with an insulating core are ideal for tongue-and-grooved and flat-faced doors
- Constructed from an 8mm insulating core, clad with two 4mm layers of ply and two 6mm exterior layers of solid timber
- Each layer is bonded with hot-melt glue forming an additional moisture barrier
- Available as 1800 x 800mm, 1800 x 1200mm, 2100 x 800mm and 2100 x 1200mm sheets
- All are available from stock in Redwood, European Oak, Sapele and Iroko with other species and sizes available to order
- All panels are designed to be cut down to size
- MDF-clad panels, ideal for painting, are available in sheets of 2440 x 1220mm
- Special sizes are available to order

45mm insulated door panel - FD30 Fire Rated

- 45mm cork-filled door panels are ideal for raised and fielded panels
- FD30 Fire Rating
- Constructed from 17mm cork core, clad with two 14mm exterior layers of solid timber
- Each layer is bonded with hot-melt glue forming an additional moisture barrier
- Available as 1800 x 900mm and 1800 x 1200mm sheets
- All are available from stock in Redwood, European Oak, Sapele and Iroko with other species and sizes available to order
- All panels are designed to be cut down to size
- MDF-clad panels, ideal for painting, are available in sheets of 2440 x 1220mm
- Special sizes are available to order

Off the shelf TEC



Door component



Window component



Stair component



PUR foam-filled door panel



Cork-filled door panel

Wood is one of Mother Nature's greatest gifts – endlessly useful, spanning a wide spectrum of natural colours from the palest ash to the richest mahogany, and admired for centuries both in its raw state and shaped at the hands of master craftsmen. We dedicate every day to sourcing it, distributing it, engineering it, developing it, learning about it and promoting its responsible use, mindful of the weight of its substantial history and enthusiastically expectant of its exciting future.

Timbmet Products

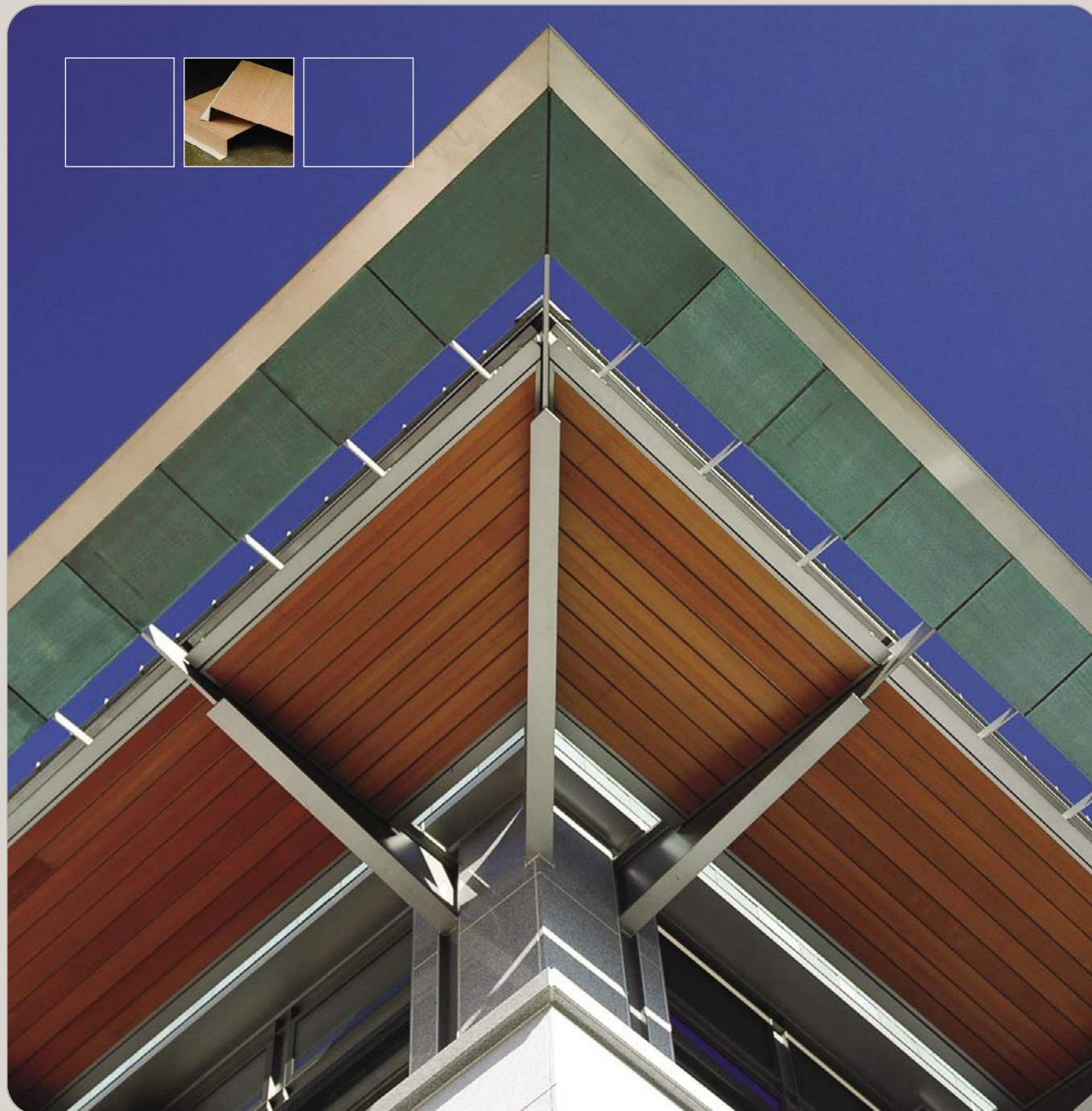
Timbmet offers one of the most extensive ranges of certified hardwoods, clear softwoods, panel products, flooring, decking, machining, door and window components and bespoke and highly engineered solutions in Europe.

Timbmet Innovation

We are dedicated to sourcing new and exciting timber products from around the world and applying our imagination and expertise to developing the application of wood through regular sector-specific focus groups.

Timbmet Intelligence

Our long-standing commitment to promoting sustainability, coupled with over 65 years experience in sourcing and working with wood, enables us to advise on some of the most progressive, demanding projects happening today.



University of California Berkeley, Stanley Hall. Custom-made covered soffit, comprising of aluminium wrapped in a Western Red Cedar Veneer

Bespoke **TEC**

Custom design

Timbmet is a service-driven company. Central to our success is our ability to offer bespoke solutions designed to overcome the most exacting brief. Bespoke TEC is a demonstration of our position as the leading specialists in high-quality, bespoke engineered products. Our long-standing partnerships with suppliers, our national distribution network and the sheer breadth of our expertise ensure we can design and deliver specially created materials, guaranteed to perform to your exact specifications.

Passive window and door components

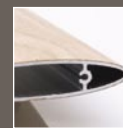
We lead the industry in our environmental policies and with recent legislation heralding a fresh era for the energy efficiency of new houses, we are playing our part. Our specially designed, made-to-order, insulated TEC components are ideally placed to produce windows and doors that meet the U-value requirements of these new regulations. The natural insulation that timber provides and the intricacy of TEC engineering mean we can offer not just an A rating but also a Passive solution.



Insulated window component



Insulated window component



Veneer-wrapped aluminium louvre



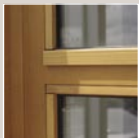
Two timbers engineered together into one component



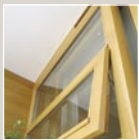
A highly engineered door blank contains steel, insulation and satisfies high acoustic levels



Evron – a rigid exterior grade PVC



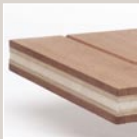
Head Office
Timbmet
Kemp House
Chawley Park
Cumnor Hill
Oxford OX2 9PH



South West
t: 01865 860350
f: 0800 085 9860



South East
t: 01865 860351
f: 0800 085 3748



Midlands & North
t: 01865 860352
f: 0800 085 9860



Scotland
t: 0141 440 0060
f: 0141 445 5736

Ireland
t: +44 (0) 1865 860620
f: +44 (0) 1865 864367

marketing@timbmet.com

www.timbmet.com